

Forest Coupe Plan

Coupe location: Blue Range

PROJECTION: GDA 94 MGA Zone 55

Coupe address: 287/019/0012

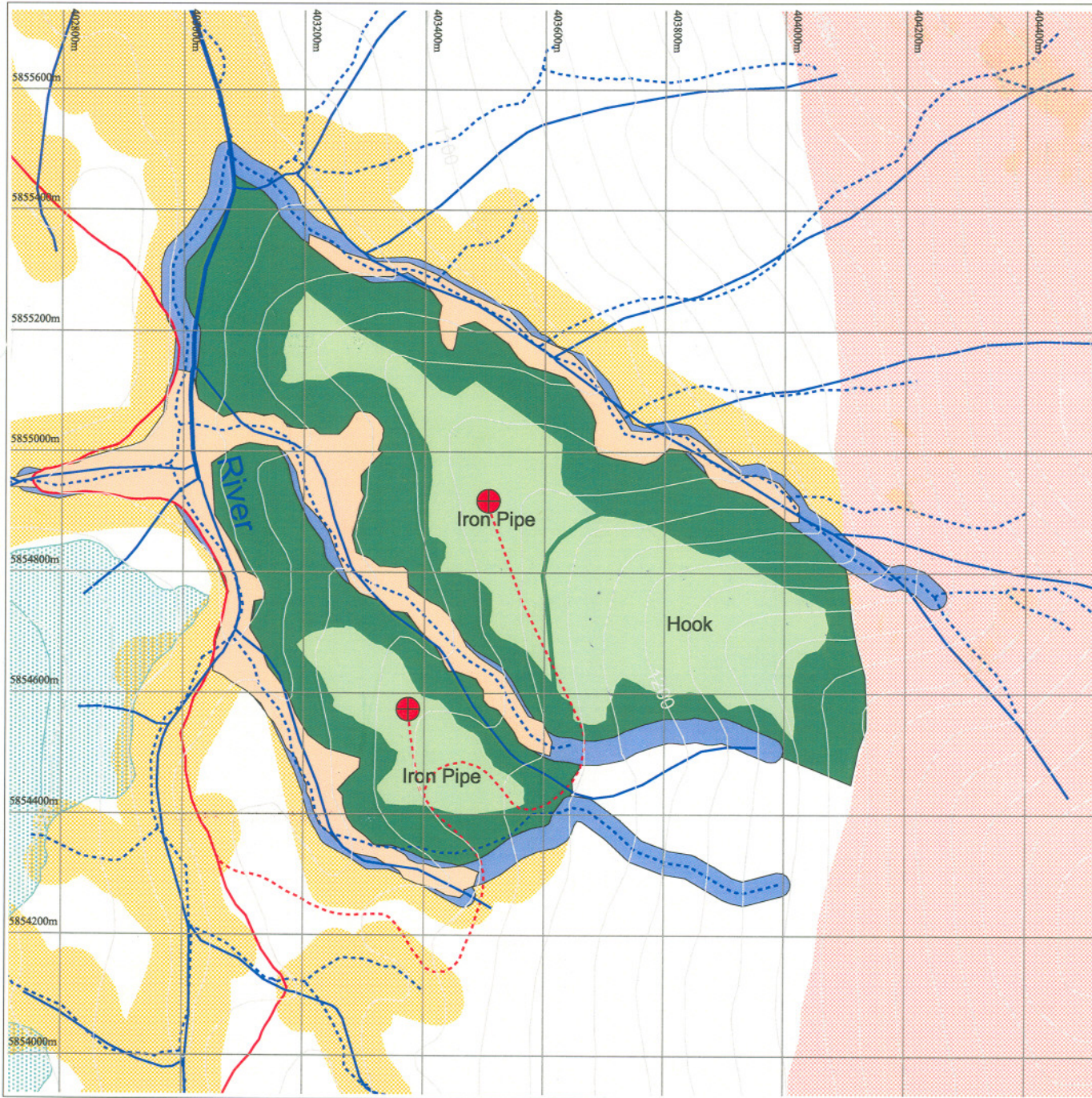
Coupe name: Iron Pipe

Area: 16 ha

FOA: Central

District: Alexandra

Grid Ref: 4034 58549



Legend

- | | | | | | | |
|-------------------------------|--------------------------------------|--|---------------|-----------|-------------------|--------------|
| | Landing | | Topography | | Coupe Area | |
| | Stream/Drainage Crossing | | Roads | | Logging History | |
| | Growth Plots | | Coupe Access | | Historic Sites | |
| Forest Management Zone | | | | Hydrology | | Habitat Area |
| | Parks Reserves and other Public Land | | API Hydrology | | Hydrology Buffer | |
| | Private Land | | Filter Strips | | Rainforest | |
| | SMZ | | Recce Route | | Retained Overwood | |
| | SPZ | | | | | |

1:10000



Disclaimer: The location and boundaries of this coupe as marked on this plan are only approximate and merely indicative. The precise boundary of the coupe will be marked on the ground by a VicForests Officer (or the Secretary of DSE where applicable) before harvesting begins, in accordance with the Management Procedures. This map is generated from VicForests and Victorian Government data and may be of assistance to you. However, VicForests does not guarantee that the publication is without flaw of any kind and therefore disclaims all liability for error, loss or damage that may arise from reliance upon it.